

Public Consultation

Section 73 application for Clifton Quarry

Clifton Quarry is a sand and gravel quarry located to the south of Kempsey and north of Severn Stoke in Worcestershire. An eastern extension was approved in 2016 as part of a wider planning permission.

We are holding a public consultation to gather feedback on our Section 73 application to vary aspects of the approved eastern extension area to reflect changed circumstances. Our proposals seek to:

- Remove Phase D from the working scheme, following identification of archaeological constraints, reducing the overall extraction footprint
- Extend the operational end date to 2039 to allow sufficient time for extraction and restoration
- Amend the internal transport arrangement so mineral is moved across the A38 by vehicle rather than conveyor
- Reduce the approved standoff distance from Clifton Village from 200m to 100m, following updated environmental assessments
- Deliver a revised restoration scheme that places more emphasis on water-based habitats alongside grassland, meadow and agricultural land


Consultation period: **Monday 13 July to Sunday 16 August 2026**

Consultation website: **clifton-quarry.tarmac.com**

Public exhibition: **Tuesday 14 July 2026, 2pm to 6:30pm,
Clifton Quarry, A38 Clifton Arles Wood,
Worcester, WR8 9JE**

Hard copies of materials are available upon request.

Questions? Contact our community consultation team:

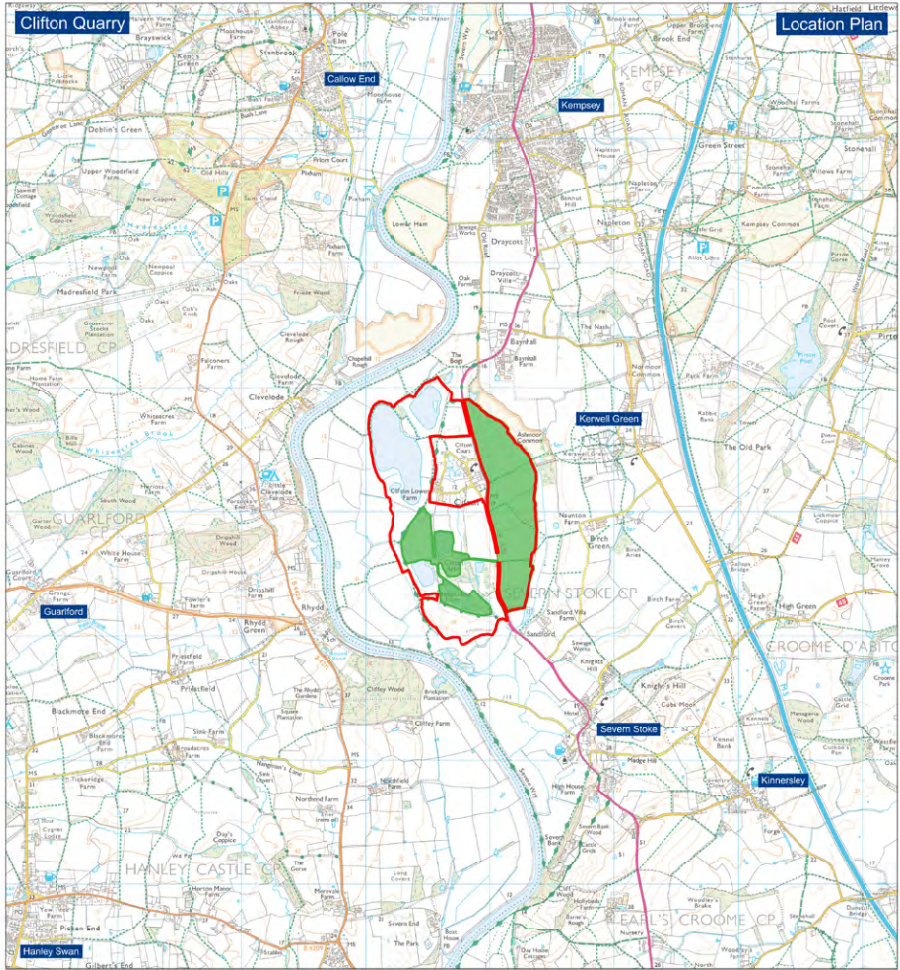
 **020 3617 6359**

 **cliftonquarry@eqcommunications.co.uk**



Clifton Quarry

Location plan and proposals



Legend

-  Planning Permission Boundary ref. 15/000006/CM
-  Section 73 Area Boundary